

ASCO QOPI[®]
Quality Oncology Practice Initiative

QOPI[®] Reporting Registry
Brought to you by ASCO and ASTRO

PROGRAM OVERVIEW

Objectives

- QOPI® Overview
- QOPI® Reporting Registry Overview
- Q and A/Discussion



What is QOPI®?

- Quality Oncology Practice Initiative
- A quality program designed for outpatient-oncology practices to foster a culture of self-examination and improvement
- Participating practices can report on over 170 evidence-based quality measures
- Practices receive performance scores by practice, site, and provider(s) as well as benchmarked scores aggregated from all participating practices
- Practices use this performance data to identify, develop and implement quality improvement initiatives leading to better care and better outcomes for their patients
- QOPI is an ASCO member benefit available at no charge to oncology practices with at least one active ASCO member.



Evolution of QOPI®



ASCO QOPI®
Quality Oncology Practice Initiative

Participation Requirements

- Register with QOPI System (one time)
- Sign current version of legal agreements
- Abstract at least one round every 2 years
- Available to all oncology practices with at least one active ASCO member in the US, US territories
 - Also available internationally: European Union, Argentina, Australia, Brazil, India, the Philippines, Saudi Arabia and the United Arab Emirates with plans to expand as resources allow.

Data Abstraction Rounds

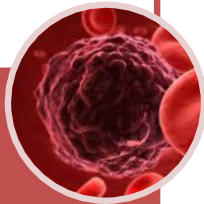
- Abstraction period open for 5 months, 2 round per year
 - Current round open until 12/4/18
- Chart selection criteria provided for each round
- Chart requirements and sampling guidelines provided
- Abstraction generally takes 1 hour per chart

MODULES

Modules with an asterisk are included in the QOPI Certification Track

- Breast Cancer*
- Colorectal Cancer*
- Non-Small Cell Lung Cancer (NSCLC)*
- Small-Cell Lung Cancer
- Non-Hodgkin's Lymphoma (NHL)
- Gynecologic oncology (GYNONC) – Ovarian, fallopian tube, and primary peritoneal cancer*
- Prostate Cancer

Disease



- Care at End of Life (EOL)
- Symptom/Toxicity Management*
- Palliative Care

Domain



- Core Measures*
 - *REQUIRED WITH OTHER MODULES FOR QOPI® PARTICIPATION*

Core



ASCO QOPI®
Quality Oncology Practice Initiative

REPORTING TRACKS

- New to QOPI®
- Fellowship
- QOPI Certification Program
- Patient Centered
- Low/Middle Income Countries (LMIC; under development)

Chart Requirements based off FTEs

Medical/Hematologist Oncologist Clinical FTEs	1	2-3	4-6	7+
Target Number of Charts per module for general QOPI® Participation or maintenance of QOPI® Certification	24	32	34	40
Chart Minimum Requirement for QOPI® Certification or Recertification (QCP Track)	48	64	68	80

FTE Calculation

MD1 – sees patients one full day/week = .2 FTE (20% of the time/week)

MD2 – sees patients one half day, 2 times/week = .2 FTE (20% of the time/week)

MD3 – sees patients 3 full days/week = .6 FTE (60% of the time/week)

MD4 – sees patients 5 full days/week = 1.0 FTE (100% of time)

Total Medical Oncologist/Hematologist clinical FTEs = 2 FTEs (.2 + .2 + .6 + 1)

Prepare for Participation

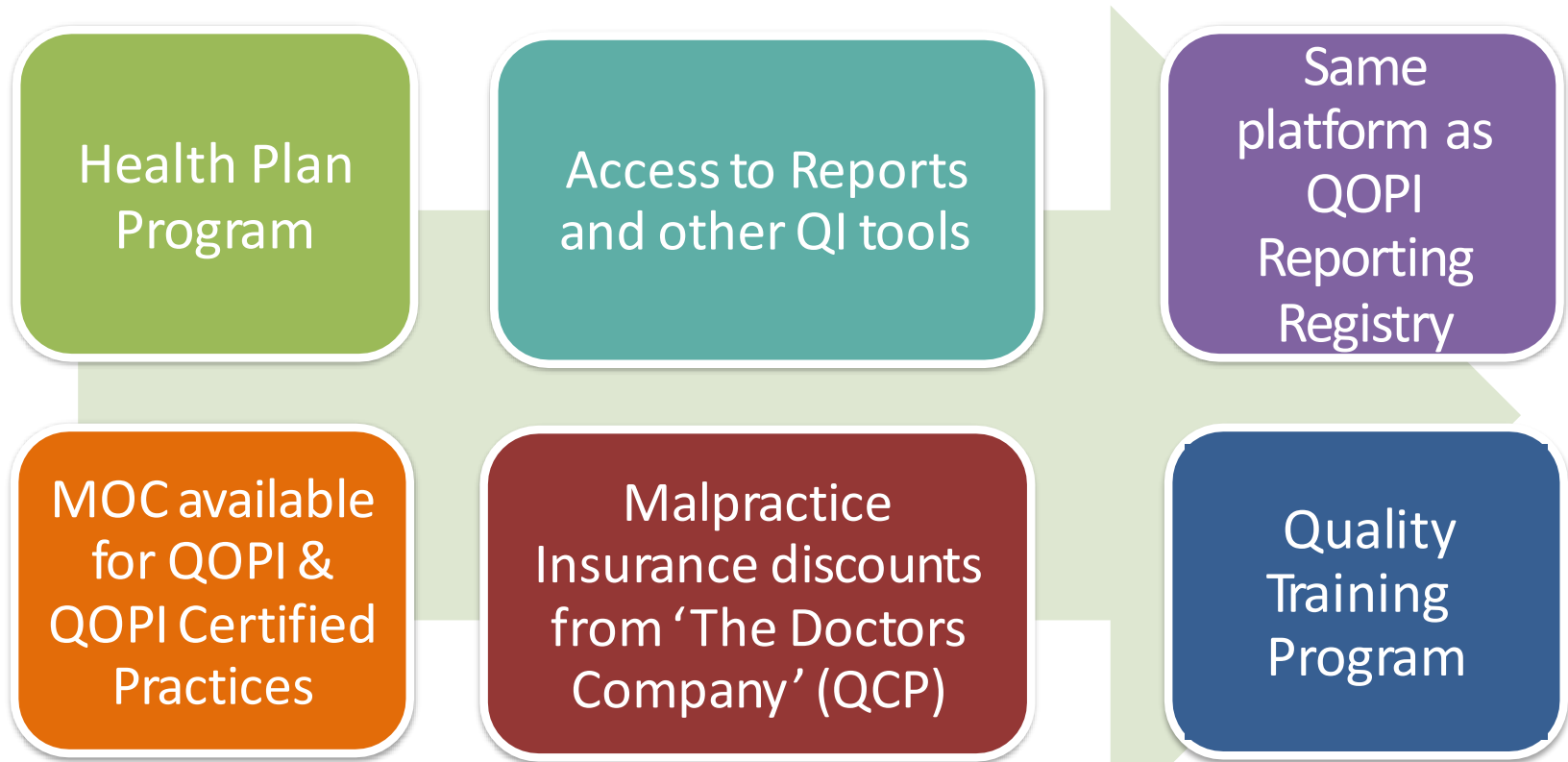
Review round documentation on the QOPI Dashboard

- QOPI User Manual
- QOPI Data Dictionary and Chart Abstraction Form
- QOPI Technical Manual
- Chart Selection Criteria

Training Sessions

- Participant Training Webinar
- Abstractor Training Webinar
- Registration Training Tutorial

Benefits of QOPI[®] Participation



QOPI Data Requests

- Data sets from 2008 through 2017 on over 180 quality measures with aggregate data from hundreds of oncology practices
- This data can be used for practice's internal quality improvement projects, as well as for research studies and publications.
- Working with CENTRA on building valuable data sets

QOPI[®] Reporting Registry

- One-stop shop for submitting 2018 data to the [Merit-based Incentive Payment System](#) (MIPS) from the Centers for Medicare and Medicaid Services (CMS).
- Choose from a list of 25 CMS-approved quality measures
- Attest to participation in Promoting Interoperability (PI) and Improvement Activities (IA)

****Participation in QOPI and QOPI Certification qualifies you to earn IA points****

- Report electronically with EHR or manually through our web-based portal

31
QOPI[®] Reporting Registry

Brought to you by ASCO and ASTRO

QOPI[®] Reporting Registry Offerings

System Integrated Approach: Practices who opt to report through the System Integrated Approach can install the Registry Practice Connector, a read-only extraction software that connects to the practice's Electronic Health Record, enabling quality data to be mapped and pulled electronically.

We also support data push.

Manual Data Entry: Web Interface Tool: Practices that cannot support a System Integrated Approach can use the Web Interface Tool, a web-based platform, to manually enter their quality data. Practices using the Web Interface Tool still have the option to attest to Improvement Activities and Promoting Interoperability.

Individual versus Group Reporting: Practices can choose to report for their providers individually by National Provider Identifier (NPI) or as a group by Tax Identification Number (TIN).

QOPI[®] Reporting Registry

Brought to you by ASCO and ASTRO

QOPI[®] Reporting Registry Cost

2018 MIPS reporting through the QOPI Reporting Registry costs \$495 per NPI for practices reporting with the System Integrated approach.

Practices submitting data manually through the Web Interface Tool will pay \$295 per NPI

The fee for both System Integrated and Web Interface Tool must be paid at the time of sign up.

QOPI[®] Reporting Registry Timeline

January 2018—Sign up and begin reporting with the QOPI Reporting Registry System Integrated Approach

June 2018—Sign up and begin reporting with the QOPI Reporting Registry Web Interface Tool

October 1st, 2018—Last day to sign up for the System Integrated (SI) approach

November 1st, 2018—Last day for practices who have signed up for SI to successfully install the Remote Practice Connector (RPC) software

March 8th, 2019 - Last day to sign Data Release Consent Forms (DRCF) for MIPS submission to CMS

March 22nd, 2019 - Last day to submit data to the QOPI Reporting Registry

January 2020—Payment adjustments begin

Additional dates will be added as deadlines arise

31
QOPI[®] Reporting Registry

Brought to you by ASCO and ASTRO

QOPI® Help Desk

The Help Desk supports both programs

- Available 9:00-5:00 ET, Monday – Friday
 - Please use “Contact Us” Button found [here](#)
OR
Click on “Feedback” Button in the QOPI® system
 - Call us @ 571-483-1660
- Services
 - Program Information
 - Registration issues
 - Create practice or other “Group”
 - Technical issues with QOPI® System
 - Clarification of questions used in data collection
 - Abstraction and reports assistance
 - Health Plan Program

MARY MAY



PATTI



STÉPHANIE



WHITNEY



ASCO QOPI®
Quality Oncology Practice Initiative

QOPI® Reporting Registry
Brought to you by ASCO and ASTRO

Questions?



ASCO QOPI®
Quality Oncology Practice Initiative

QOPI® Reporting Registry³⁷
Brought to you by ASCO and ASTRO