

ASCO[®]

AMERICAN SOCIETY OF CLINICAL ONCOLOGY
KNOWLEDGE CONQUERS CANCER

ASCO Practice Leadership Series

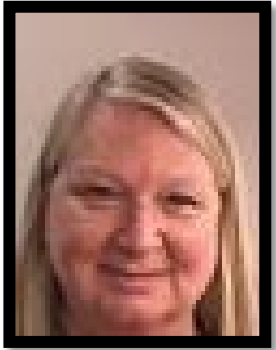
Implementing the Oncology Medical Home
Standards

Thursday, September 15, 2022, 4:00pm ET

ASCO[®] PracticeNET

Networking for Education and Transformation

Speakers



Ronda Bowman, MHA, RN, OCN
Director, Patient Centered Cancer Care
ASCO Care Delivery



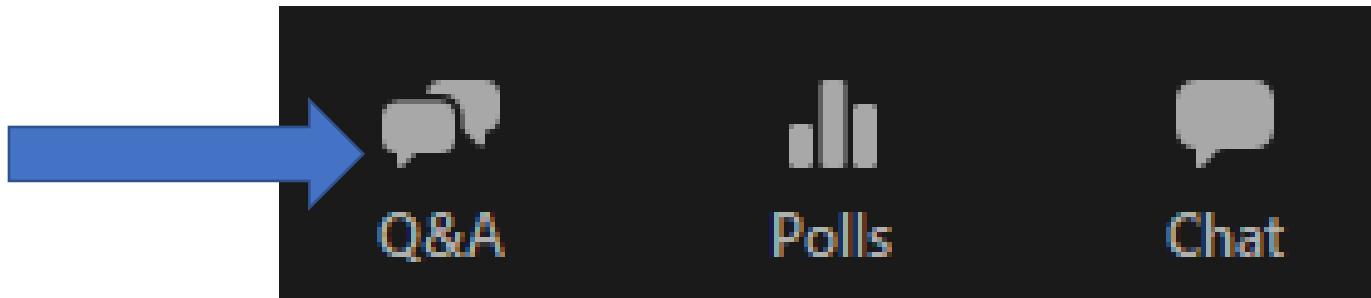
Veronica Gorman, MBA
Senior Program Manager,
Oncology Medical Home
ASCO Care Delivery



Bo Gamble, BS
Director of Quality & Value
Community Oncology Alliance (COA)

Welcome!

- Please mute your phones
- Q&A session at the end
 - Use the Q&A button in the bar at the bottom of your Zoom window
 - Type in your question
 - We will address questions in the order they are received



ASCO[®]

AMERICAN SOCIETY OF CLINICAL ONCOLOGY

ASSOCIATION FOR CLINICAL ONCOLOGY

KNOWLEDGE CONQUERS CANCER

Background and Progress of OMMH Standards Implementation

Oncology Medical Home and Patient-Centered Cancer Care Certification

Applies care knowledge to support patient preferences, needs, and values

- **Applies learnings and findings from previous initiatives** to form a meaningful program that identifies and promotes quality cancer care for all that support that journey.

Establishes high quality cancer care

- A care delivery system that proves **high quality, evidence-based** cancer care with **measurement**.

Reinforces continual improvement

- **Reinforces** on-going quality cancer care with **ongoing assessment and continual improvement**.

Standardization

- **Standard and consistent platform** for quality cancer care for national, regional and local payers that are **reformist in payment methodology**.

Clinical and Financial

- **Clinical and financial information** for a transparent views of quality and value in cancer care.

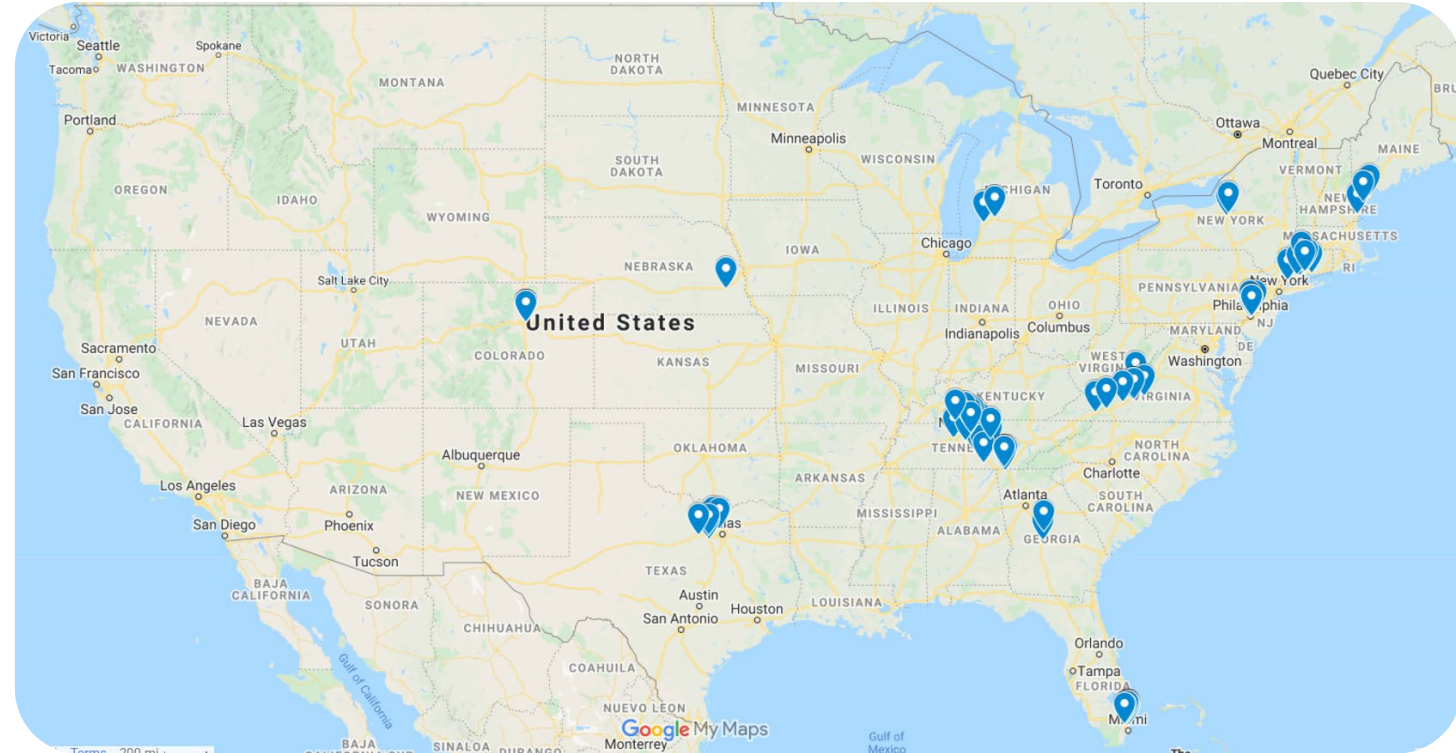
Summary

ASCO Patient-Centered Cancer Care Certification Pilot

- Oncology Medical Home Standards established and published, August 2021
- June 2021 to June 2023 (recruitment, certification, evaluation)
- 12 practices, commercial payers' engagement
- Based on ASCO/COA Oncology Medical Home Standards
- Policy review, on-site survey, and compliance documentation
- EHR- and claims-based measures during and after certification process
 - ASCO Quality Reporting Registry (AQRR)
 - Supported by CancerLinQ's SmartLinQ dashboard
- Certification awards began July 2022

APC4 Pilot Participants

- **Blue Ridge Cancer Care**
Roanoke, VA*
- **Cancer & Hematology Centers of Western Michigan****
Grand Rapids, MI
- **Central Georgia Cancer Care**
Macon, GA
- **Hematology-Oncology Associates of CNY**
East Syracuse, NY
- **Jefferson Health- Sidney Kimmel Cancer Center** Philadelphia, PA
- **Memorial Cancer Institute**
Hollywood, FL
- **Nebraska Hematology-Oncology, PC**
Lincoln, NE
- **New England Cancer Specialists*****
Scarborough, ME
- **Tennessee Oncology****
Nashville, TN
- **The Center for Cancer and Blood Disorders****
Fort Worth, TX
- **University of Colorado Cancer Center**
Aurora, CO
- **Yale New Haven Health – Smilow Cancer Hospital**
New Haven, CT



12 practices, 88 sites of service, 482 oncologists

- * US Oncology Network
- ** Partner of OneOncology
- *** Dana Farber Cancer Institute affiliate

Success in Value-Based care

Innovations in alternative payment models need **complementary innovations in care delivery** in order to achieve meaningful savings and improve quality

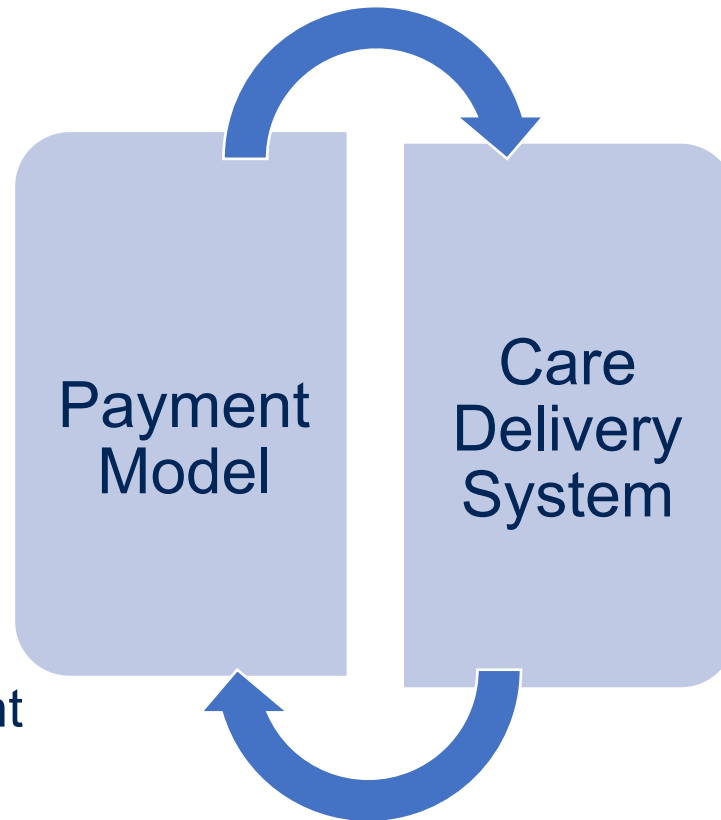
CMMI

- Oncology Care Model
- Enhancing Oncology Model

Commercial Payers

- Aetna
- Anthem
- Cigna
- Humana
- Multiple Blues

ASCO Pt-Centered Oncology Payment



Patient-Centered Cancer Care Certification

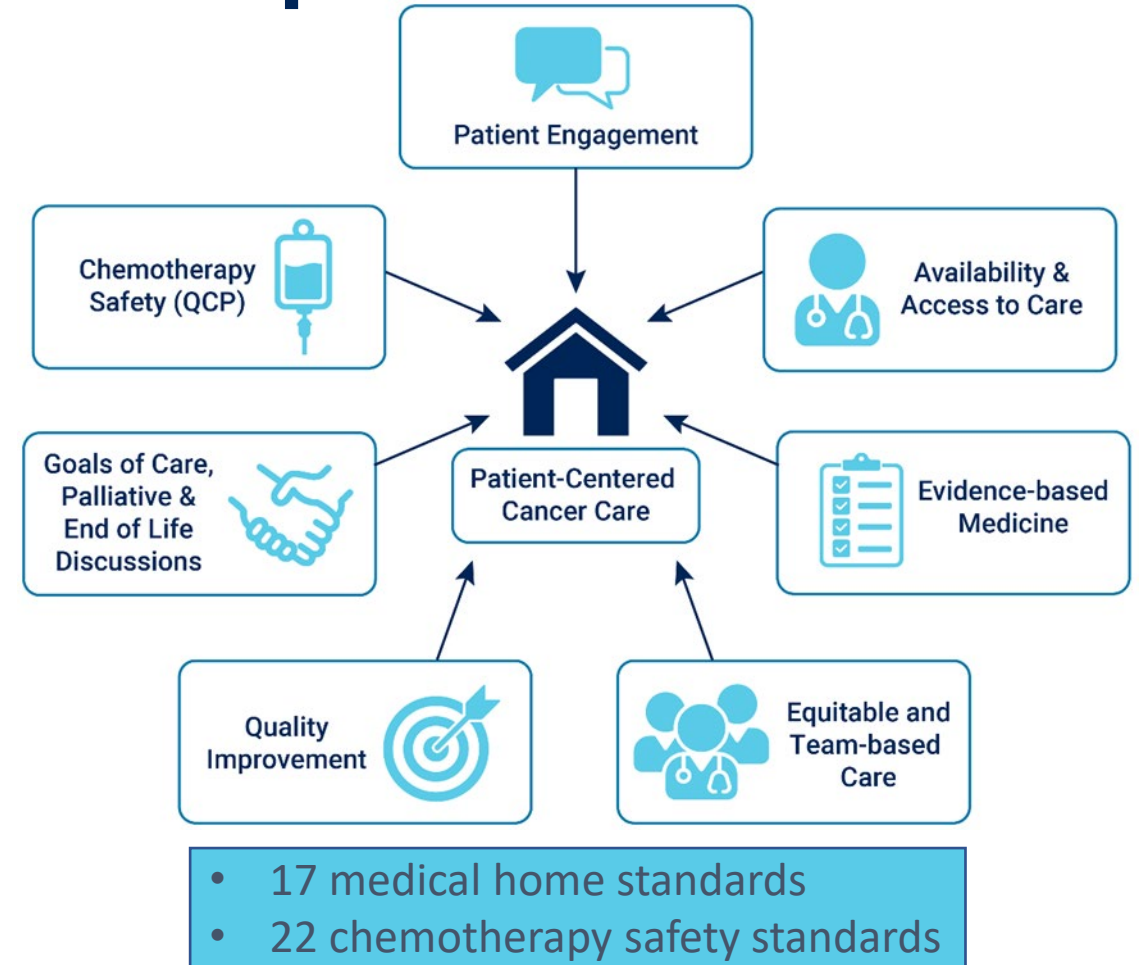
featuring ASCO and COA Oncology Medical Home

Oncology Medical Home (OMH) Standards Development

The **ASCO-COA OMH standards** were developed based on:

- consensus of a **multidisciplinary Expert Panel**:
 - clinicians
 - health system administrators
 - patient advocates.
- a **systematic review** of evidence including
 - **comparative** peer-reviewed studies
 - studies of **clinical pathways**
 - systematic review of **survivorship care plans**

Standards approved by COA's Payment Reform Committee and the ASCO Board of Directors.



Published in JCO-OP August 2021

Pilot Evidence of Practice Transformation

Number of Practices Implementing APC4 Standards for the First Time

- Advance Care Planning
- Goals of Care Discussion
- Health Equity*
- Patient Experience Survey
- ED/Hospitalization Avoidance
- Oncology Treatment Pathways
- Triage Pathway Process
- Chemotherapy Safety Standards
- Financial Counselor
- Survivorship Care Program

APC4 is a learning collaborative offering monthly calls to share learnings, plus a one-day Quality Training Program session for participants

All Pilot practice types and sizes are capable of meeting the standards

* Two practice added a dedicated EDI coordinator

Ongoing Assessment and Improvement Activities

- Oncology Treatment Pathway Utilization
- Health Equity
- Patient Experience Survey results and analysis
- Performance Improvement activities
- Ongoing follow-up for standards performance
- Quality measures performance

ASCO[®]

AMERICAN SOCIETY OF CLINICAL ONCOLOGY
ASSOCIATION FOR CLINICAL ONCOLOGY
KNOWLEDGE CONQUERS CANCER

Success in Value-Based Care Delivery

ASCO Patient Centered Cancer Care Certification

- Patient Engagement
- Shared Decision Making
- Education
- Timeline Access to Care

- Advance Care Planning
- Psychosocial Support
- Assessing Pain
- Appropriate Care at the End of Life
- **Health Equity**

Patient Feedback

Evidence Based Medicine

Balanced Measurement Scorecard

Quality Cancer Care

Utilization & Cost

- Use of Evidence and Value-Based Clinical Pathways
- Reducing Variations in Care
- Continuous Improvement

- Hospital Admissions
- Emergency Department Visits
- Hospice Utilization

Timeline:

July 1 2021
Pilot Begins

July-Sept
Measure #1

Sept-Nov
Site Surveys

Oct-Dec
Measure #2

Dec-April 2022
Compliance

July 2022
Certifications
Begin

August 2022 – June 2023
Ongoing Assessment and
Evaluation

Pilot to Program
TBD 2023
ASCO ASSOCIATION FOR
KNOWLEDGE CONQUERS CANCER
CLINICAL ONCOLOGY

Enhancing Oncology Model (EOM) Practice Performance Requirements

Practice	EOM	APC4
24/7 access	X	X
Symptom Triage		X
Navigation	X	X
Care Plan	X	X
Survivorship plan	X	X
Psychosocial assess	X	X
Financial counseling		X

Enhancing Oncology Model (EOM) Practice Performance Requirements

Practice	EOM	APC4
Rx by national standards	X	Value Pathway compliance
Clinical trial access		X
Identify social needs	X	Assess health equity
e-PROS	Gradual implementation	Planned
Utilize data for QI	X	X
Certified EHR	X	X
Advance care planning	X	X
Chemotherapy safety		X

ASCO[®]

AMERICAN SOCIETY OF CLINICAL ONCOLOGY

ASSOCIATION FOR CLINICAL ONCOLOGY

KNOWLEDGE CONQUERS CANCER

Goals, Learnings, and Successes

APC4 Pilot Goals

Demonstrate successful review of practices' quality of cancer care delivery through audit and measurement

Confirm that certification of practices as an Oncology Medical Home adds value to the practice

Confirm value to patients and payers (through collection of data on quality, cost and satisfaction of cancer care delivery)

Develop consistent expectations for high quality cancer care in all payment models

ASCO Patient-Centered Cancer Care Certification: Findings and Learnings

Value to Practices:

- **Single set of ASCO/COA standards** that allows gap analysis and provides a comprehensive roadmap to high quality cancer care for the entire patient journey.
- **Collaborative discussions** in pursuit of the above goals based on the successful experiences of others.
- **Prepares the cancer care teams** for the reformation and recognition of care delivery based on quality and value.

The ASCO Patient-Centered Cancer Care Certification program is appropriate for all cancer care delivery practices/health systems

Certification Awards: Summer 2022

- **Blue Ridge Cancer Care***
- **Cancer & Hematology Centers of Western Michigan****
- **Central Georgia Cancer Care**
- **Hematology-Oncology Associates of CNY**
- **Jefferson Health – Sidney Kimmel Cancer Center**
- **Memorial Cancer Institute**
- **Nebraska Hematology-Oncology, PC**
- **New England Cancer Specialists*****
- **Tennessee Oncology****
- **The Center for Cancer and Blood Disorders****



* US Oncology Network
** Partner of OneOncology
***Dana Farber Cancer Institute affiliate

Questions and Discussion



Appendices

Oncology Medical Home Standards

Oncology Medical Home Standards

Patient Engagement

- Education about Oncology Medical Home
- Financial counseling
- Education on diagnosis and treatment
- Survivorship Care Program



Availability & Access to Care

- Expanded access to care; symptom triage
- Emergency department, hospital admission & readmission data analysis
- Post-discharge follow-up emergency department and hospitalization
- Follow up for missed or cancelled appointments



Oncology Medical Home Standards

Evidence Based Medicine

- Oncology Clinical Pathway treatment planning and reports on physician compliance
- Clinical research trials access and participation



Equitable and Comprehensive Team-Based Care

- Medical oncologist directed care team
- Care coordination with other pertinent physicians and services
- Team functioning, performance, and communication
- Navigation Services/Psychosocial Assessment
- Health Equity Assessment



Oncology Medical Home Standards

Quality Improvement

- Patient experience survey and analysis
- Quality improvement, analysis and sustainability
- Electronic health record core data completeness and quality measures



Goals of Care, Palliative and End of Life Care Discussions

- Advance care planning
- Goals of care discussions; end-of-life care
- Access to Palliative Care

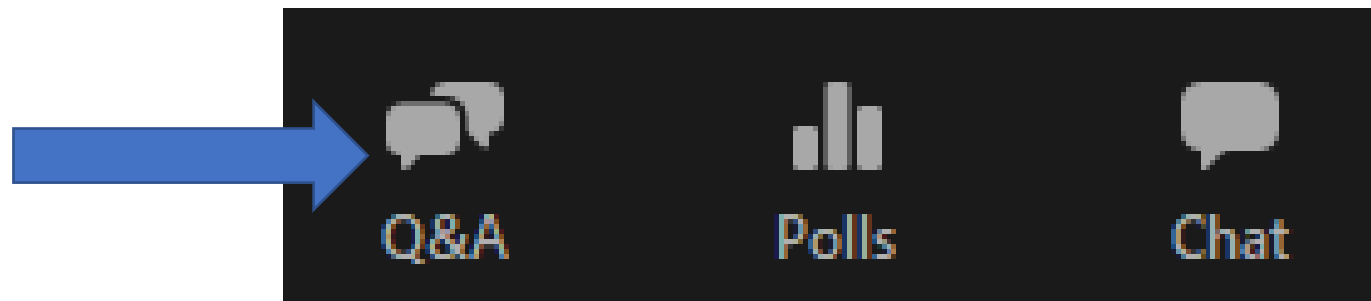
Chemotherapy Safety

- Quality Oncology Practice Initiative (QOPI) Certification Program or Chemotherapy Safety Standards Compliance



Feel free to submit questions

Use the Q&A button in the bar at the bottom of your Zoom window



Learn More About PracticeNET

- Free oncology business benchmarking program
 - Productivity, revenue staffing resources
- Covers multiple service lines
 - Providers and APPS
 - Medical oncology/hematology
 - Radiation oncology
 - Gynecologic oncology
- Must have at least 1 ASCO member at your practice
- Contact us at **practicenet@asco.org**

Next Calls

- 3rd Thursday of each month, 4:00 – 5:00pm ET
- October 20
 - Evaluation & Management Coding Changes for 2023
- November 17
 - The Medicare Physician Fee Schedule Final Rule & Outpatient Prospective Payment System

<https://practice.asco.org/calendar>