

2021 Evaluation and Management Changes: New Prolonged Services Code

A major component of the 2021 Evaluation and Management (E&M) changes is the introduction of CPT ® code 99XXX (an official CPT code number will be assigned at a later date) effective **January 1st, 2021**. The code reflects a “prolonged office or other evaluation and management services that requires at least 15 minutes or more of total time either with OR without direct patient contact on the date of the primary E&M service (either CPT® codes 99205 or 99215)”.

CPT ® Code Description for 99XXX

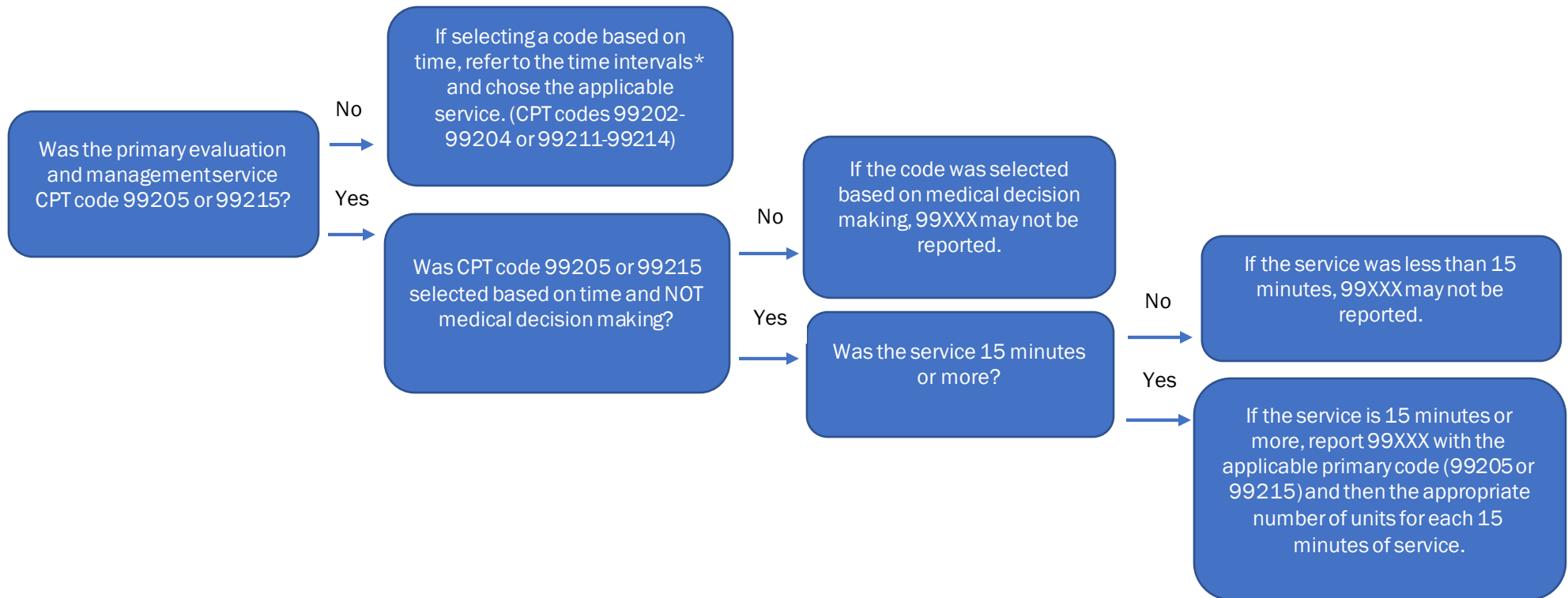
99XXX-Prolonged office or other outpatient evaluation and management service(s) (beyond the total time of the primary procedure which has been selected using total time), requiring total time with or without direct patient contact beyond the usual service, on the date of the primary service; each 15 minutes (List separately in addition to codes 99205, 99215 for office or other outpatient Evaluation and Management services.)

CPT ® 99XXX Code Reporting

CPT ® code 99XXX may only be reported in conjunction with 99205 or 99215 if the codes were selected based on the time alone and not medical decision making. A service of less than 15 minutes should not be reported.

| Total Duration of a New Patient Office or Other Outpatient Level 5 Service (99205) | | Total Duration of an Established Patient Office or Other Outpatient Level 5 Service (99215) | |
|--|---|---|---|
| Time | Codes | Time | Codes |
| Less than 75 minutes | Not reported | Less than 55 minutes | Not reported |
| 75-89 minutes | 99205 and 99XXX (1x) | 55-69 minutes | 99215 and 99XXX (1x) |
| 90-104 minutes | 99205 and 99XXX (2x) | 70-84 minutes | 99215 and 99XXX (2x) |
| 105 or more | 99205 and 99XXX (3x or more for each additional 15 min) | 85 or more | 99215 and 99XXX (3x or more for each additional 15 minutes) |

Decision Tree for CPT Code 99XXX



Reporting Example

A physician spends 84 minutes with a patient on the date of an office or other outpatient visit.

| Minutes | Code Billed | Notes |
|---------|---------------|--|
| 54 | 99215 | 40-54 minutes of total time is spent on the date of the encounter; code 99215 once to account for the maximum (54) minutes |
| 15 | 99XXX | Bill 2 units of 99XXX for each additional |
| 15 | 99XXX | 15 minute increment |
| 84 | Total Minutes | |

Disclaimer: The above illustration is based on the example provided in the “CPT® Evaluation and Management (E/M) Office or Other Outpatient (99202-99215) and Prolonged Services (99354, 99355, 99356, 99XXX) Code and Guideline Changes.”

Additional Changes to Prolonged Services Codes

There have also been amendments to the guidelines for other prolonged services codes 99354-99357 and 99358-99359.

Since CPT code 99XXX was created to describe a 15-minute prolonged office or other evaluation and management services (with OR without direct patient contact), CPT codes 99354 and 99358 can no longer be reported with CPT codes 99201-99215 in 2021.

If CPT codes 99202-99204 and 99211-99214 are chosen based on time (“[2021 Evaluation and Management Changes: Selecting a Code Based on Time](#)”), the E&M service would be selected based on the appropriate time intervals. If a prolonged service occurs past the intervals for 99205 and 99215, then CPT code 99XXX would be reported for each 15-minute unit of service.

Resource

[CPT® Evaluation and Management \(E/M\) Office or Other Outpatient \(99202-99215\) and Prolonged Services \(99354, 99355, 99356, 99XXX\) Code and Guideline Changes](#)