

# ASCO's Quality Training Program

## Pancreatic Cancer Biobank



## Mitchell Cancer Institute / The University of South Alabama

Moh'd Khushman, M.D

Meredith Jones, , MS, BSN, RN, BA

**ASCO** Quality  
Training Program

Date: 9/12/2018

# Institutional Overview



Medical  
Oncologists (N=9)

Nurse  
Practitioners  
(N=5)

Radiation  
Oncologists (N=3)



As of 2011, the  
population within a  
60-mile (100 km)  
radius of Mobile is  
1,262,907



Academic institution  
University-based



# Problem Statement

Bio-banking blood specimens from patients with cancer is instrumental to research conducted by basic scientists and clinicians. Only 7 % of patients with pancreatic cancer (PC) did get their blood bio-banked at MCI. This negatively impacts grants funding and efforts to reach milestones necessary for NCI designation.

What? 7% of patients with PC get their blood bio-banked

Who? Research team (Basic scientists and medical oncologists)

Where? Mitchell Cancer Institute

When? July 2017 to June 2018

Why? Bio-banking blood specimen from patients with cancer is instrumental to research conducted by basic scientists and clinicians. Grants. NCI designation.



# Team Members

**Leader:** Moh'd Khushman, M.D

**Facilitator:** Meredith Jones, MS, BSN, RN, BA

**Medical Oncology Clinic:** William Taylor, M.D; Sachin Pai, M.D; Ashish Mannie, M.D; Sanjyot Bhadkamkar, NP; Jazzmen Mamuschia, R.N; Brumeatta Grey, M.A

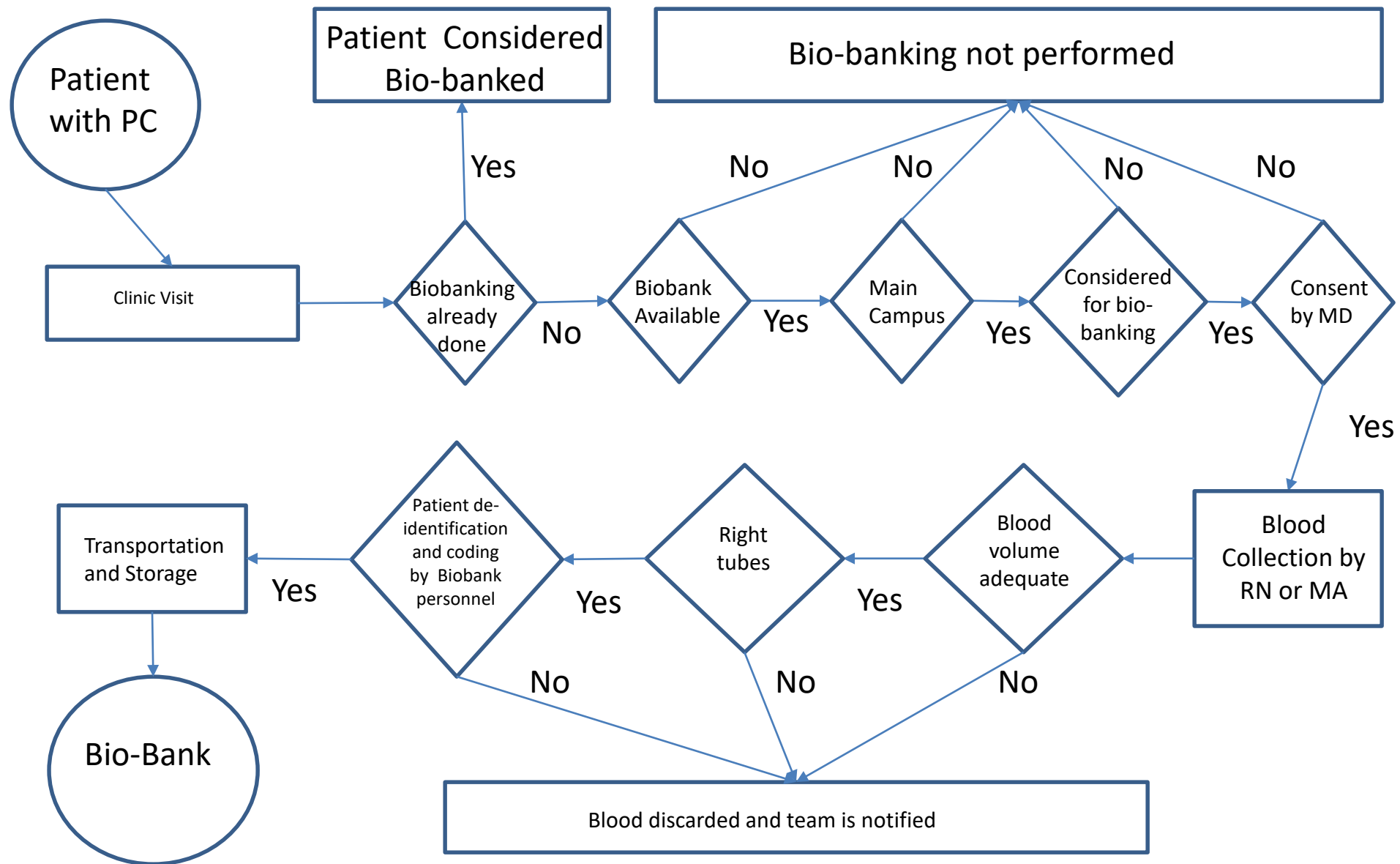
**Basic Science:** Ajay Singh, PhD; Seema Singh, PhD; Steven McClellan

**Lab:** Elizabeth Renee Dees

**IT support:** Cindy Nelson

**Regulatory:** Winona Blount; Pam Horner; Milton Pierson

# Current Process Map (Flow Chart)



# Cause & Effect Diagram

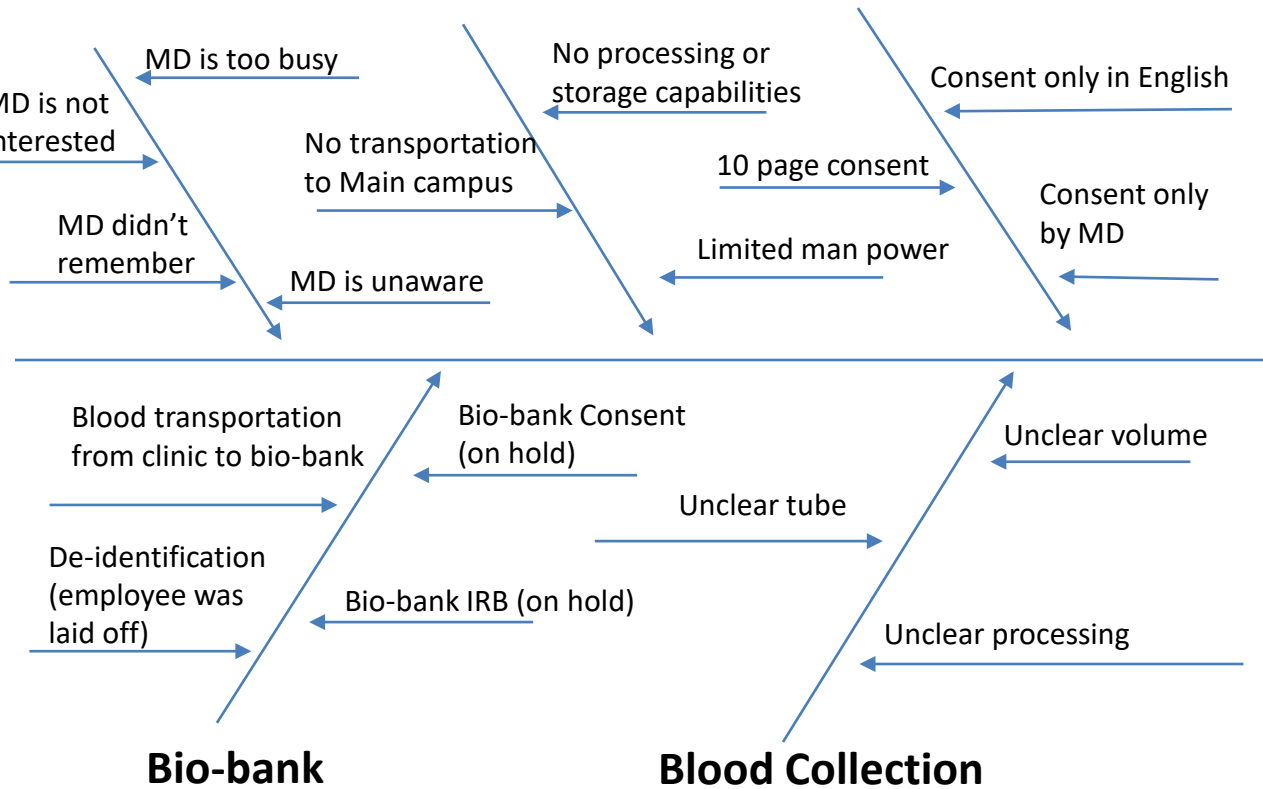
## Consideration for bio-banking by MD

## Satellite Facilities (20 + miles from MCI)

## Consent



Only 7% of Pancreatic patients blood specimens were bio-banked at MCI between July 2017 and June 2018.





# Diagnostic Data

- Observation
- Feedback after a meeting
- Interview with physicians, nurses, lab personnel, IT team and regulatory team
- Review of EMR and IT

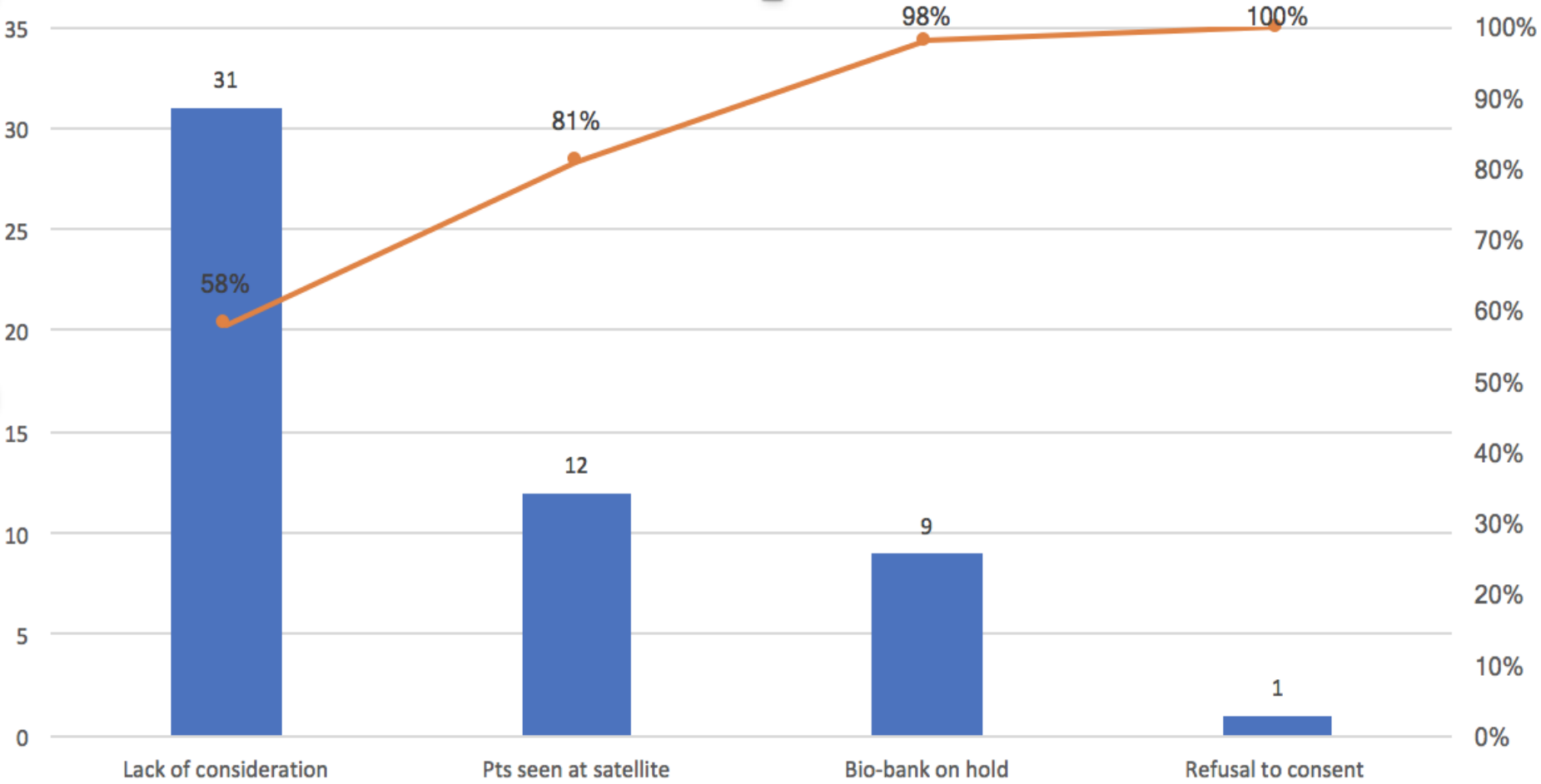


# Baseline Data

- Between 10/2/2017 to 8/8/2018, 57 patients with PC were seen at MCI. 4 out of 57 (7%) patients had their blood bio-banked and 1 out of 57 (2%) patient refused bio-banking.
- 12 out of 57 (21%) patients were seen at our satellite site. No bio-banking is available there.
- Bio-banking through the biobank protocol was put on hold by administration on 3/16/2018. Since then 9 out of 57 (16%) patients were seen and were not bio-banked.
- 36 patients were seen at MCI (not satellite) and were seen prior to 3/16/2018. Of those only 5 were considered for bio-banking. 31 out of 57 (54%) were not considered for bio-banking.



# Pareto Chart





# Aim Statement

>50% of patient with pancreatic cancer seen at MCI between 10/1/2018 to 12/1/2018 will have their blood bio-banked



# Measures

- Measure: The percentage of patients at MCI with pancreatic cancer (PC) who get their blood bio-banked

- Patient population: Patients with pancreatic cancer seen at MCI

-Exclusions (if any): none

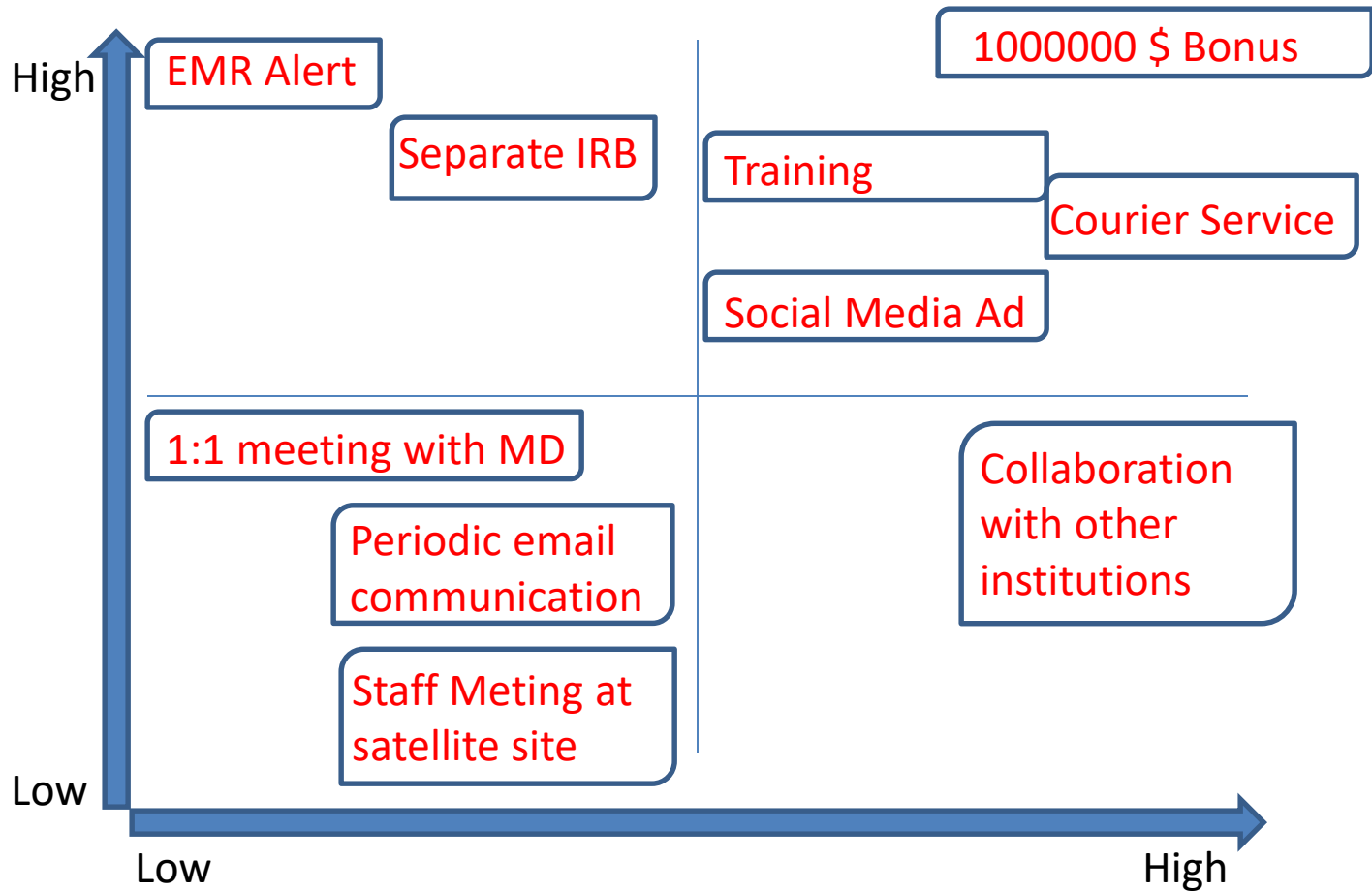
- Calculation methodology:

- ✓ # of considered patients/Patients with PC seen in MCI
- ✓ # of consented patients/patients with PC seen in MCI
- ✓ # of orders to collect blood/Patients with PC seen in MCI
- ✓ # of collected blood/patients with PC seen in MCI
- ✓ # of de-identified specimens/patients with PC seen in MCI
- ✓ # of stored/logged specimens/patients with PC seen in MCI

-Numerator & Denominator (if applicable)

- Data source: EMR/IT
- Data collection frequency: Weekly
- Data quality(any limitations):

# Effort/Impact



Effort

# Intervention

- EMR Alert
- Separate IRB and Consent submission
- Meeting with oncologists and nurses
- Courier utilization for satellite clinic
- Blood collection and de-identification clarification
- Training

# Measures (10/24-11/15)

- Measure: The percentage of patients at MCI with pancreatic cancer (PC) who get their blood bio-banked **20/24 (83%)**

- Patient population: Patients with pancreatic cancer seen at MCI: **24**

-Exclusions (if any): none

- Calculation methodology:

- ✓ # of considered patients/Patients with PC seen in MCI: **20/24 (83%)**
- ✓ # of consented patients/patients with PC seen in MCI: **20/24 (83%)**
- ✓ # of orders to collect blood/Patients with PC seen in MCI: **20/24 (83%)**
- ✓ # of collected blood/patients with PC seen in MCI: **20/24 (83%)**
- ✓ # of de-identified specimens/patients with PC seen in MCI: **20/24 (83%)**
- ✓ # of stored/logged specimens/patients with PC seen in MCI: **20/24 (83%)**

-Numerator & Denominator (if applicable)

- Data source: **EMR/IT**
- Data collection frequency: **Once on 11/15/2018**
- Data quality(any limitations): **Excellent (Inaccurate coding)**

# Statistical Analysis

	<b>Outcome 1</b>	<b>Outcome 2</b>	<b>Total</b>
<b>Group 1</b>	4	53	<b>57</b>
<b>Group 2</b>	20	4	<b>24</b>
<b>Total</b>	<b>24</b>	<b>57</b>	<b>81</b>

## Fisher's exact test

The two-tailed P value is less than 0.0001

The association between rows (groups) and columns (outcomes) is considered to be extremely statistically significant.